



**SUPPLY AND
INSTALLATION OF A
LIFTING MAGNET 12 V,
2G40, ENGINE SWITCH-OFF
KIT.**

Document no.: EW_NAT_SPEC_2012

Revision: 00

Issue date:
06/05/2025

Page 1 of 4

Compiled by:

Mr. S Malobola,
Engineering Technician

Signature:

A handwritten signature in black ink, appearing to be "S Malobola", enclosed within a circular stamp.

06/05/2025

Checked by:

Mr. M. Theku,
Acting Senior Engineer

Signature:

A handwritten signature in black ink, appearing to be "M Theku", enclosed within a circular stamp.

06/05/2025

Approved by:

Mr. K. Pillay,
Principal Engineer

Signature:

A handwritten signature in black ink, appearing to be "K Pillay", enclosed within a circular stamp.

06/05/2025

Transnet Engineering			
Document no: EW_NAT_SPEC_2012	Revision: 00	Issue date: 06/05/2025	Page 2 of 4

CONTENTS

1	INTRODUCTION	3
1.1	SCOPE	3
2	FITMENT	4
3	TRANSPORT	4
4	WARRANTY	4
5	MANUALS AND CATALOGUES	4

1 INTRODUCTION

1.1 SCOPE

This document specifies the requirements for the lifting magnet 12V, 2G40, engine switch off kit to be supplied and fitted which should include but may not be limited to the following components. All components are depicted within Figure 1:

- a) 1 off Lifting magnet, 12 V
- b) 1 off Nut, mild-steel, M6
- c) 1 off Stud bolt, mild-steel, M6
- d) 2 off Hexagon nuts, mild-steel, M6
- e) 2 off Hexagon head screws, mild-steel, G8.8, M10 x 25 mm
- f) 2 off Spring washers, Ø 10 mm
- g) 1 off Rod for lifting the magnet
- h) 2 off Duo-Clips (Not shown in figure 1)
- i) 1 off Lever to stop the device
- j) 1 off Torsion spring
- k) 1 off Clamping pin, 3 x 18 mm (Not shown in figure 1)
- l) 1 off Cable harness lifting magnet
- m) 1 off Bracket for lifting magnet
- n) 2 off Hexagon screws, mild-steel, G8.8, M6 x 55 mm
- o) 2 off Spring washers, Ø 6 mm

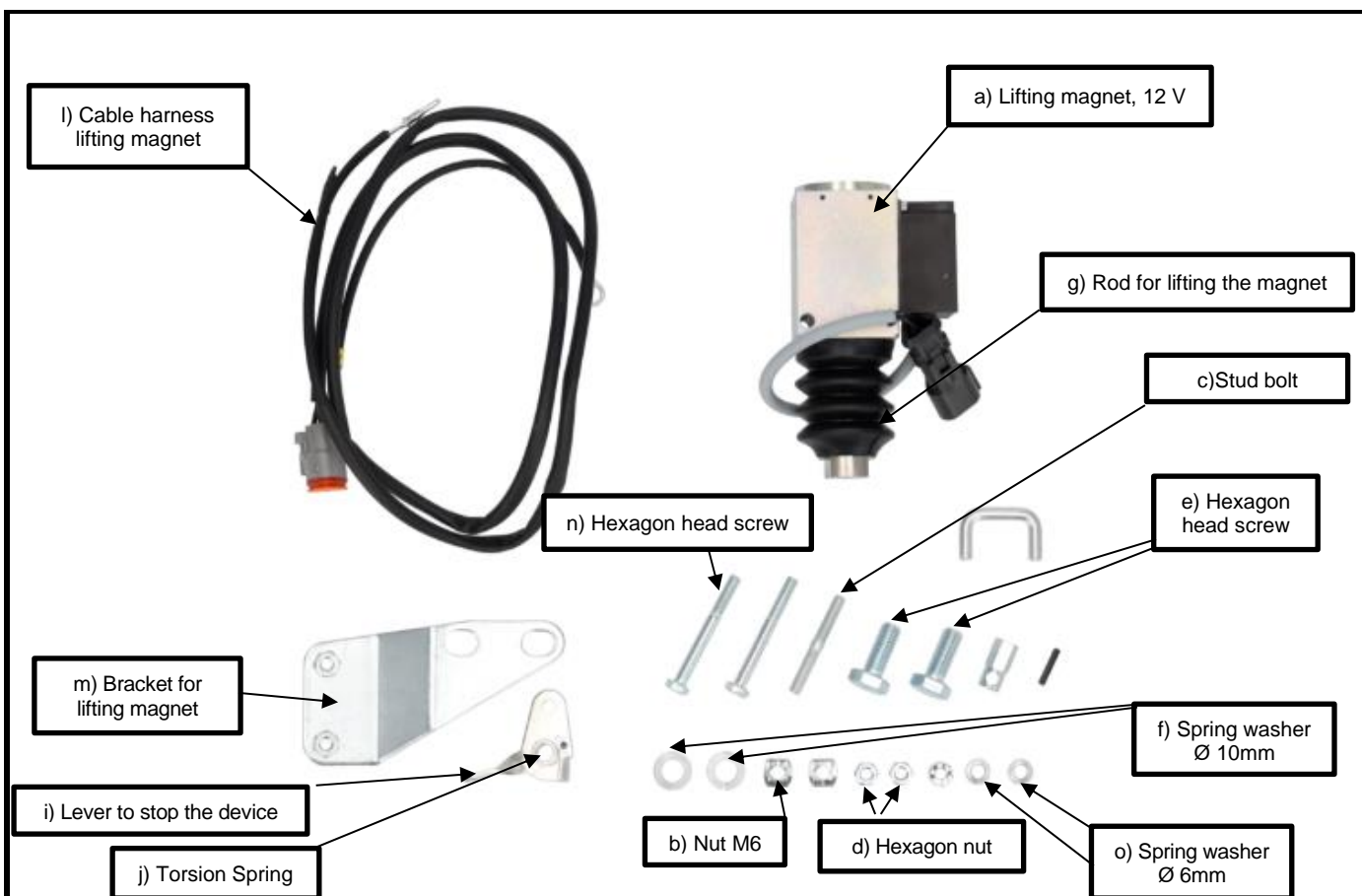


Figure 1: Lifting magnet 12V, 2G40, engine switch off kit

2 FITMENT

The supplier shall be responsible for fitting the supplied lifting magnet kit. The supplier must come with their own tools needed to fit the components. Details of where and on what the components will need to be fitted will be confirmed by Transnet Engineering.

3 TRANSPORT

Transnet Engineering will confirm the address with the supplier. The supplier shall be responsible for all logistics.

4 WARRANTY

The supplier shall provide the applicable warranty documentation for the supplied components.

5 MANUALS AND CATALOGUES

- All documents must be provided in English.
- The supplier shall provide any applicable operating manual/s for the components supplied.