

**ANNEXURE: A**

**STATEMENT OF WORK**

---

# **Marine Vessels Isandlwana Steelworks for East London Dry Dock**

---



**Content**

	<b>Purpose,</b>	<b>Pg 3</b>
<b>1.</b>	<b>Background</b>	<b>Pg 3</b>
<b>2.</b>	<b>Scope of Work (SOW)</b>	<b>Pg 4</b>
<b>3.</b>	<b>Dredging Services Required Delivery Period</b>	<b>Pg 8</b>
<b>4.</b>	<b>Location of Work</b>	<b>Pg 8</b>
<b>5.</b>	<b>Safety</b>	<b>Pg 8</b>

## **Purpose**

Various areas of the marine vessel Isandlwana require steelworks. The works are required to be completed in the Port of East London. A suitably skilled service provider is required to carry out the steelworks on various areas of the marine vessel, including on the hopper and void spaces.

## **1. Background**

Dredging Services is a unit within Transnet National Ports Authority (TNPA), responsible for maintenance and capital dredging across all 8 South African seaports. As part of its asset base, Dredging Services has hydraulic, and mechanical dredgers, designed to carry out ports' maintenance, by way of dredging sand from beneath water surface. Dredging sand from seaports allows for proper maintaining of promulgated minimum depths, for ease of navigation of large ships into (and out of) ports.

The two hydraulic dredgers are the Ileembe and the Isandlwana. The two mechanical dredgers are the Italeni and the Mohoma. The steelworks material, such as steel plates will be required to be supplied by the suitably qualified service provider. The following particulars and details are applicable to the project and the vessels:

### *1.1. Particulars applicable to the project*

Particulars applicable to the project with which the present statement of work is concerned, are tabulated in Table 1.

**Table 1 – Isandlwana steelworks project particulars**

Vessel names	Isandlwana
Project location	Port of East London
Maintenance process	Dry dock maintenance
Project commencement date	On date of award
Project duration	1 month (in dry dock)

### *1.2. Particulars applicable to the vessel*

Particulars applicable to the vessel with which the steelworks project is concerned, are tabulated in Tables 2.

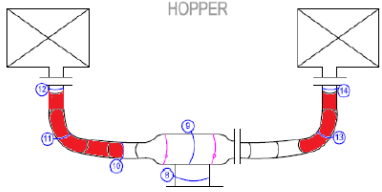
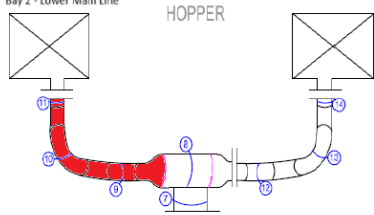
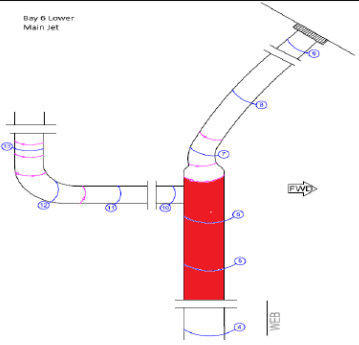
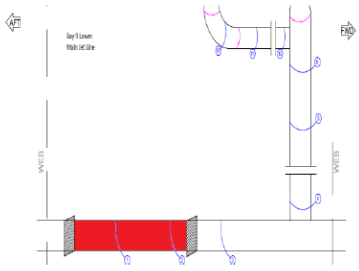
**Table 2 - Marine vessel (Isandlwana) particulars**

Ship name	Isandlwana
Ship type	Trailer Suction Hopper Dredger (TSHD)
IMO number	9532903
Port of registry	Durban port
Gross tonnage	4897 T
Length overall	91.0 m
Maximum breath	20.75 m
Propeller arrangement	Twin-screw
Propeller type	Controllable Pitch
Propulsion system	Berg Propulsion
Maximum draught	6.0 m
Registered power	3,200 kW (2 x Wartsila 8L20 1,600 kW)

## **2. Scope of Work (SOW)**

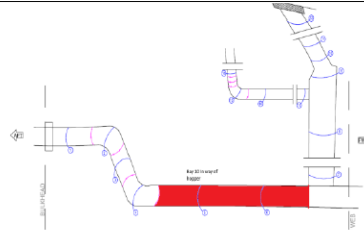
Service providers are welcome to attend to the vessel to view and measure the jet line pipes where deemed fit. This can be arranged through the TNPA, Dredging services project manager. Scope of Work (SOW) for the steelworks project is as follows:

- Cutting out (and replacement with new), of jetline (200mm inside diameter, and 219mm outside diameter) steel pipes with segments of various lengths. Schedule 40 pipe material should be supplied by the service provider. See Figures 1 - 4 for areas of concern.
- Labour is required for removal and installation of the new pipes. Surface preparation and paint coating is also required. The service provider is required to clean up and disposal of all sediments after completion the job.
- This should include all consumables required to conduct the works, inclusive of blanking plates cut to size.

DESCRIPTION
<b>1. Void Space-Starboard Side</b>
<p>Bay 1-Lower Main Jet Lines; In way of hopper. Remove old pipe and replace with new piping at areas highlighted in red from seam to seam.</p> 
<p>Bay 2-Lower Main Jet. Remove old pipe and replace with new piping at areas highlighted in red from seam to seam.</p> 
<p>Bay 6-Lower Main Jet</p> <p>Remove old pipe and replace with new piping at areas highlighted in red from seam to seam.</p> 
<p>Bay 9-Lower Main Jet</p> <p>Remove old pipe and replace with new piping at areas highlighted in red from seam to seam.</p> 

**Figure 1** – Void space Starboard side jet lines

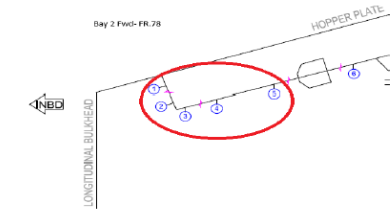
Bay 10-Lower Main Jet-in way of hopper Remove old pipe and replace with new piping at areas highlighted in red from seam to seam.



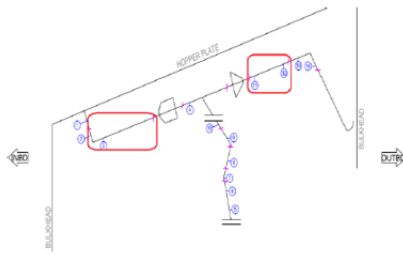
**Figure 2 – Void space Starboard side jet lines continued...**

## 2. Void Space -Port Side

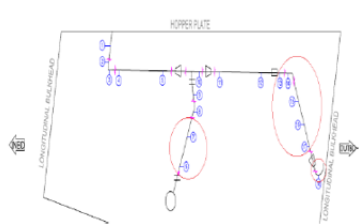
Bay 2-Fwd, in way of transverse web FR.78. Remove old pipe and replace with new piping at the areas highlighted in red from seam to seam.



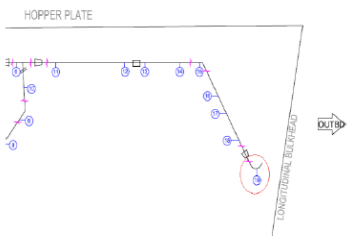
Bay 3-Fwd, in way of transverse web FR.73. Remove old pipe and replace with new piping at areas circled in red from seam to seam.



Bay 7-Fwd, in way of transverse web FR.53. Remove old pipe and replace with new piping at areas circled in red from seam to seam.

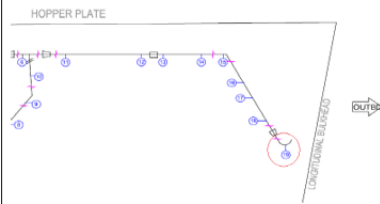


Bay 8-Fwd, in way of transverse web FR.48. Remove old pipe and replace with new piping at areas circled in red from seam to seam.

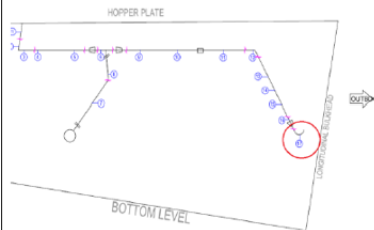


**Figure 3 – Void space Port side jet lines**

Bay 9-Fwd, in way of transverse web FR.43. Remove old pipe and replace with new piping at areas circled in red from seam to seam.

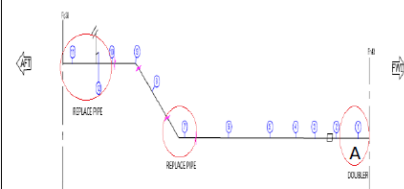


Bay 10-Fwd, in way of transverse web FR.38. Remove old pipe and replace with new piping at areas circled in red from seam to seam.



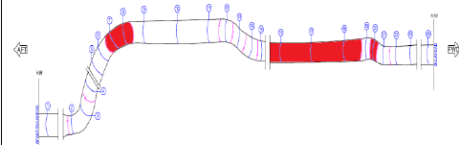
#### Jet Lines -Port Side

Bay 10 FR38-FR43- Remove old pipe and replace with new piping at areas circled in red from seam to seam. Area A is to have a doubler installed on it.



#### Jet Pipe -Port Side

FR88-FR101- Remove old pipe and replace with new piping at areas highlighted in red from seam to seam.



**Figure 4 - Void space Port side jet lines continued...**

### **3. Dredging Services Required Delivery Period**

The work is to be completed within one month from the date of award (in the dry dock), counting from the date of commencement of the works (inclusive of weekends and public holidays).

### **4. Location of Work**

Port of East London.

### **5. Safety**

Contractors must adhere to safety rules as set by Dredging Services before performing the requested work. The contractor will ensure compliance with the following documents which shall be approved prior to attending to the vessels/work:

- Supplier Compliance File Assessment Checklist
- Supplier Site Access Certificate
- Section 37 Mandatory Agreement
- Induction Attendance Register