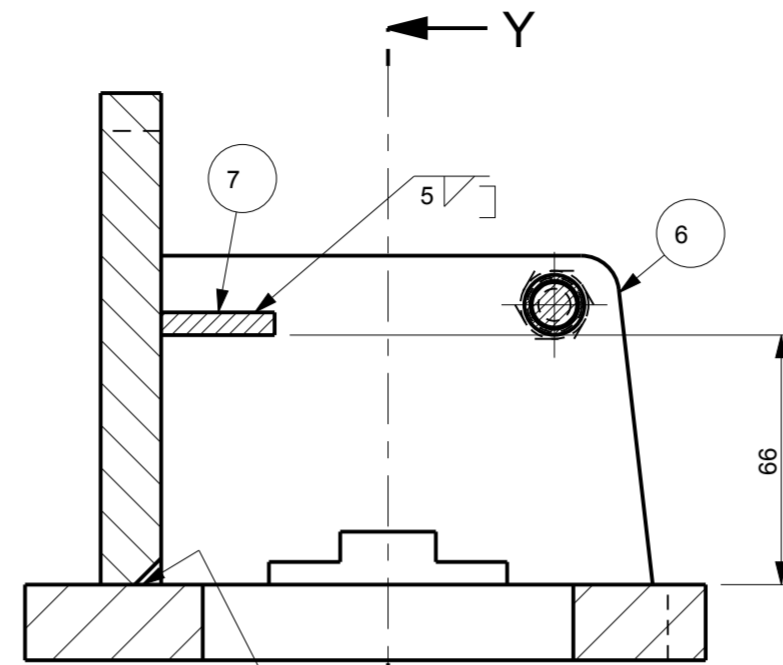
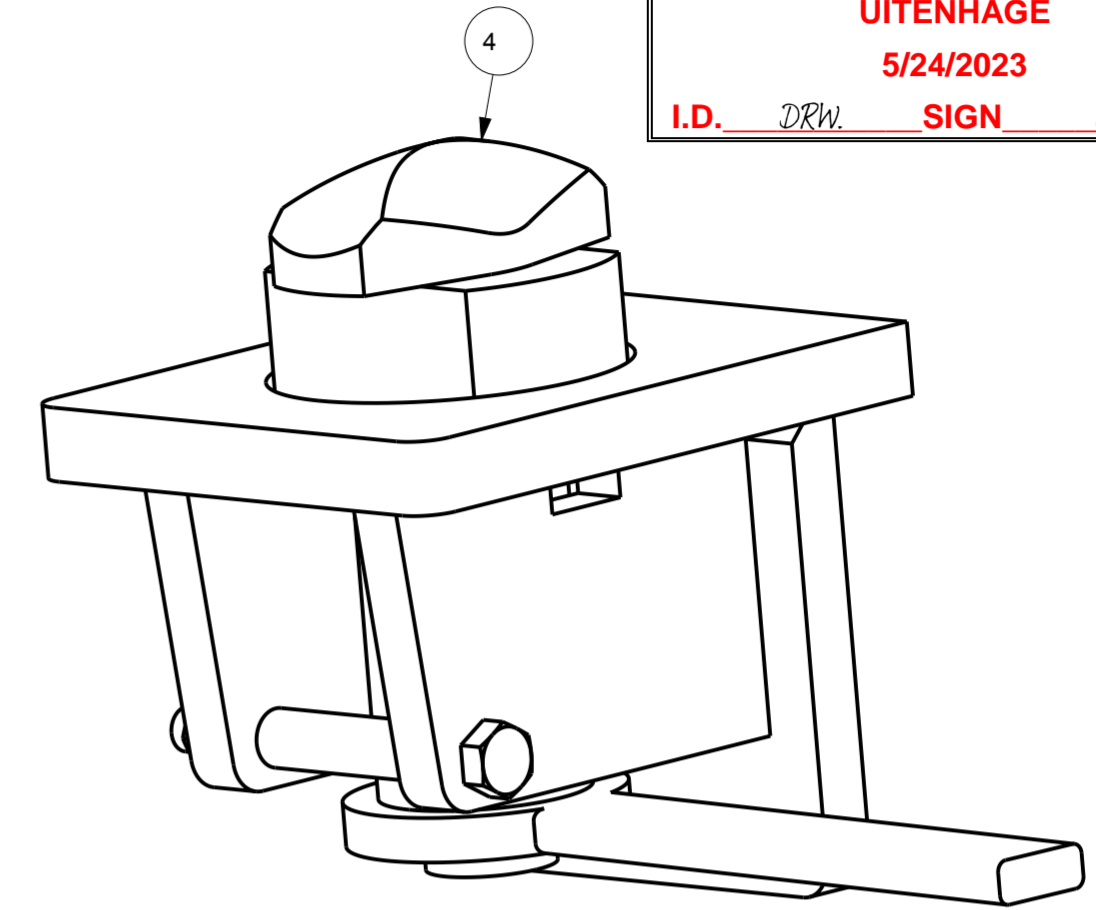


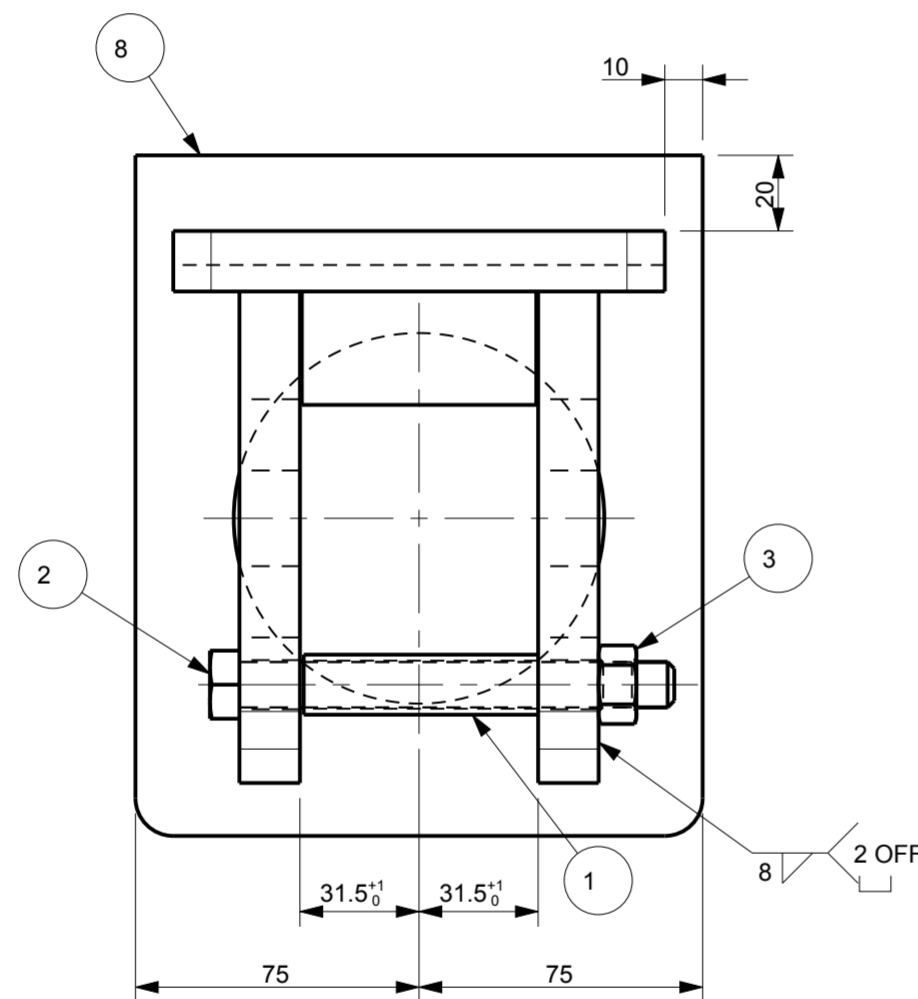
SECTION Y-Y



SECTION X-X



CONTROLLED COPY IF STAMPED
 IN RED TRANSNET ENGINEERING
 UITENHAGE
 5/24/2023
 I.D. DRW. SIGN H.M



NOTE:

ITEM 4 OMITTED FOR CLARITY
 ITEM 4 TO BE FITTED BY TWISTLOCK BRACKET MANUFACTURER
 NO WELDING PERMITTED IN HOLE AND LOCKING AREA

ITEM	TITLE	QTY	DRG/PART No.	MATERIAL	SPEC	DESCRIPTION	SIZE	MASS
8	PLATE TOP	1	PEW578B0136					3.05
7	PLATE STOP	1	PEW578B0134					0.09
6	PLATE SIDE	2	PEW578B0133					1.27
5	PLATE BACK	1	PEW578B0132					2.09
4	TWISTLOCK	1	-	STEEL	96/611 ALT 400 R/1	TWISTLOCK		5.46
3	NUT	1	-	STEEL	GRADE 8	M12	M12	0.01
2	BOLT, HEX, BLACK	1	-	STEEL	GRADE 8.8	M12X115	115	0.12
1	STRUCTURAL TUBE	1	-	STEEL	SABS 657	ROUND TUBE DIA 15.8	62	0.03

RENUMBERED FROM
 DRG. BFX3435A_000
 J.v.N 25/10/2011

ITEM	TITLE	QTY	DRG/PART No.	MATERIAL	SPEC	DESCRIPTION	SIZE	MASS
<p>COPYRIGHT THIS DRAWING TOGETHER WITH THE COPYRIGHT IS THE PROPERTY OF TRANSNET THIS DRAWING OR ANY PART THEREOF IS NOT TO BE COPIED OR OTHERWISE REPRODUCED OR USED FOR MANUFACTURE OR ANY OTHER PURPOSE WITHOUT THE WRITTEN PERMISSION FROM CHIEF EXECUTIVE, TRANSNET RAIL ENGINEERING</p>								
ASSEMBLY DRG No.		PEW786B0002		DRAWN		J.v.N		
CLASS		SHR-28		CHECKED		D.C		
TYPE		CONTAINER WAGON		APPROVED		D.C		
DATE		21/07/2011		SCALE		1:2		
DOCUMENT REFERENCE No.				TRANSNET RAIL ENGINEERING		No.		

**TWISTLOCK, SINGLE BRACKET
 FOR CONTAINER WAGON**

SHEET 1 OF 1

AMENDMENTS

MASS 13.40 Kg

MATERIAL

SEE TABLE