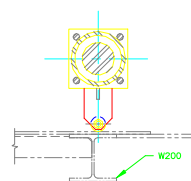
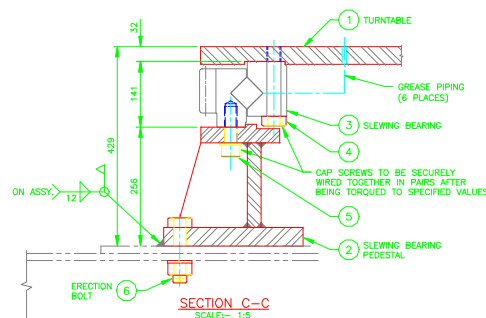


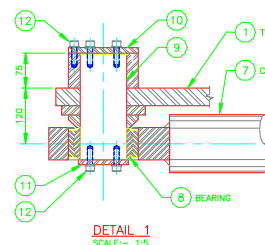
PLAN VIEW  
TURNTABLE & CYLINDERS SHOWN  
WITH BOOM IN SHIPLOADING POSITION



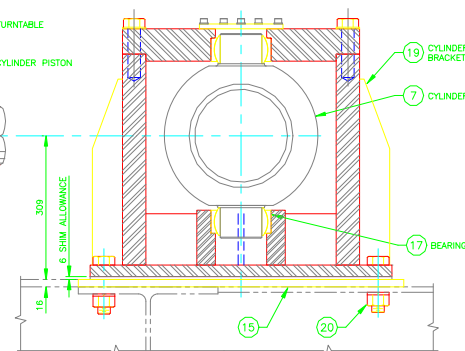
SECTION A-A



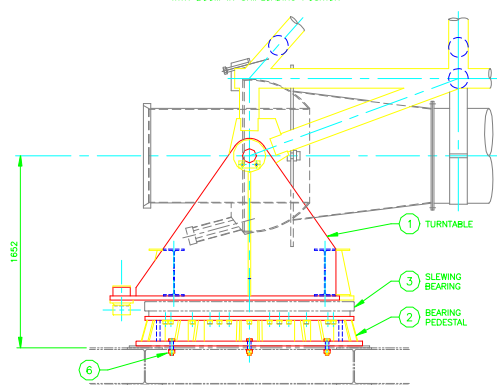
SECTION C-C  
SCALE:- 1:5



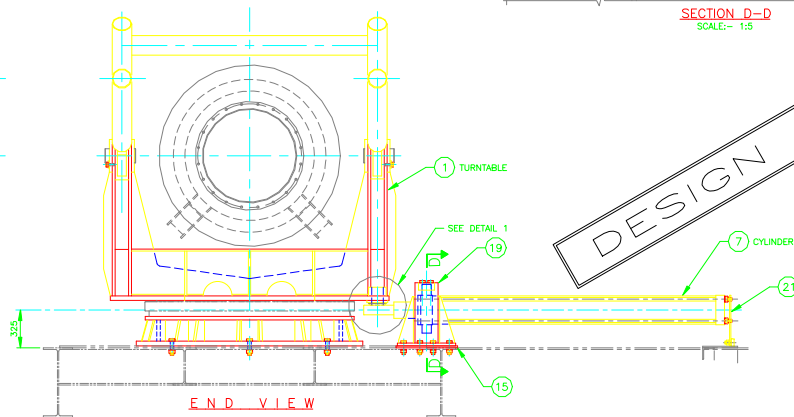
DETAIL 1  
SCALE: 1:5



SECTION D-D



SIDE VIEW



E N D   V I E W

**SECTION D-D**  
**SCALE:- 1:5**

**DESIGN FROZEN**

23	8	NUT
22	2	ROD
21	2	ROD
20	24	M2
19	2	CYL
18	2	HOLE
17	2	BOLT
16		
15		
14		
13		
12	20	M1
11	2	RE
10	2	RO
9	2	RE
8		

**PROJAWRONKA PZ**

**-FIELD ASSEMBLY OF COMPONENTS-**

- 1. COMPONENTS SHALL BE FREE OF DAMAGE BEFORE INSTALLATION.
- 2. ALL FASTENERS SHALL BE OF THE SAME TYPE AND ASTM A-325.
- 3. BOLTS WITH CORRESPONDING NUTS - UNLESS OTHERWISE SPECIFIED.
- 4. MATE SURFACES SHALL BE FLUSH AND FREE OF BURRS AND SHALL BE PREPARED AS FOR ASTM A-325 - FRICTION TYPE CONNECTION.
- 5. BOLTS SHALL BE INSTALLED AND TENSIONED BY CALIBRATED WRENCH OR "TURN-OF-NUT" METHOD.
- 6. BOLT TENSIONING SHALL BE UNDERTAKEN UNDER SUPERVISION OF AN INSPECTOR WHO WILL FURNISH A LOG OF INSPECTION.
- 7. WHEN INSTALLED, THE SHIELDING SHALL BE CHECKED FOR BOTTOM CLEARANCE.
- 8. ALL BOLTS - STRUCTURAL, MAINTENANCE, FOUNDATION, ETC., SHALL BE OF THE SAME TYPE AND TENSILE STRENGTH, ETC.

**NOTES:**

1. THESE DRAWINGS USE NORTH AMERICAN PROJECTION
2. DIMENSIONS SHOWN ON THESE DRAWINGS ARE IN MILLIMETERS
3. FOR SHIP LOADER GENERAL ARRANGEMENT SEE DWG. D99-300C
4. COMPONENTS SHALL BE FREE OF DAMAGE BEFORE INSTALLATION
5. FASTENERS TO BE TORQUED TO THE FOLLOWING VALUES:  
M16 = 215 Nm  
M20 = 410 Nm  
M24 = 710 Nm  
M27 = 1050 Nm  
M30 = 1400 Nm

		ESTIMATED FINISHED MASS		—
23	8	NUT — DIAMETER TO SUIT CYLINDER RODS		
22	2	ROLLER BRACKET SUPPORT	06	15.3
21	2	RETAINER PLATE	06	7.3
20	24	M27 x 100 CR 8.8 BOLT C/W NUT & WASHERS		
19	2	CYLINDER TRUNNION BRACKET	05	
18	2	WASHER	05	
17	2	BEARING SKF GE 80 ES	05	2.3
16				
15				
14				
13				
12	20	M12x25 SOCKET HEAD CAP SCREW GR 8.8		
11	2	ROLLER PLATE	04	0.47
10	10	ROD EYE PIN	04	28.4
9	2	RETAINER PLATE	04	3.3
8	2	SPHERICAL BEARING — SKF GE100 D0	04	4.66
7	2	HYDRAULIC CYLINDER, 203.2 ID x 2362 STROKE CUNNINGHAM MODEL BHS32-44-S-3000 C/W TRUNNION MOUNTING & SPHERICAL ROD EYE BUSHING		
6	8	M30x125 BOLT C/W NUT & WASHER CR 8.8		
5	40	M27x75 DRILLED SOCKET HEAD CAP SCREW GR 8.8		
4	42	M12x150 HEX HEAD CAP SCREW CR 8.8		
3	1	SLIDING BEARING — 42705-0403 10/X	03	710
2	1	SLIDING BEARING PEDESTAL	03	1020
1	1	TURNABLE	02	3110
ITEM#	QTY	DESCRIPTION	DWG	WT

										<div>EE</div> <div>ELVEC ENGINEERING LIMITED</div> <div>NEWCASTLE, A.C.</div>		<div>NP</div> <div>INDUSTRIES</div>		<div>GFC</div>		PORTNET RICHARDS BAY-DRY BULK JETTY 1000 TPH SHIPLOADER No. 2				SHIPLOADER BOOM BOOM TURNTABLE ASSEMBLY GENERAL ARRANGEMENT				<div></div>		<div>DWG NO.</div> <div>D03-3120-01</div> <div>REV</div> <div>-</div>		<div>DWG. DATE</div> <div>Feb 23/04</div>	
REVISIONS				MADE BY		DATE		LETTER		Certified for Construction		Feb 23/04		DATE		D03-3000-01		REFERENCE DWGS											
A				B		C		D		E		F		G		H		I		J		K		L					