

TRANSNET



delivering freight reliably

PORT DEVELOPMENT FRAMEWORK PLANS 2022

Port of East London

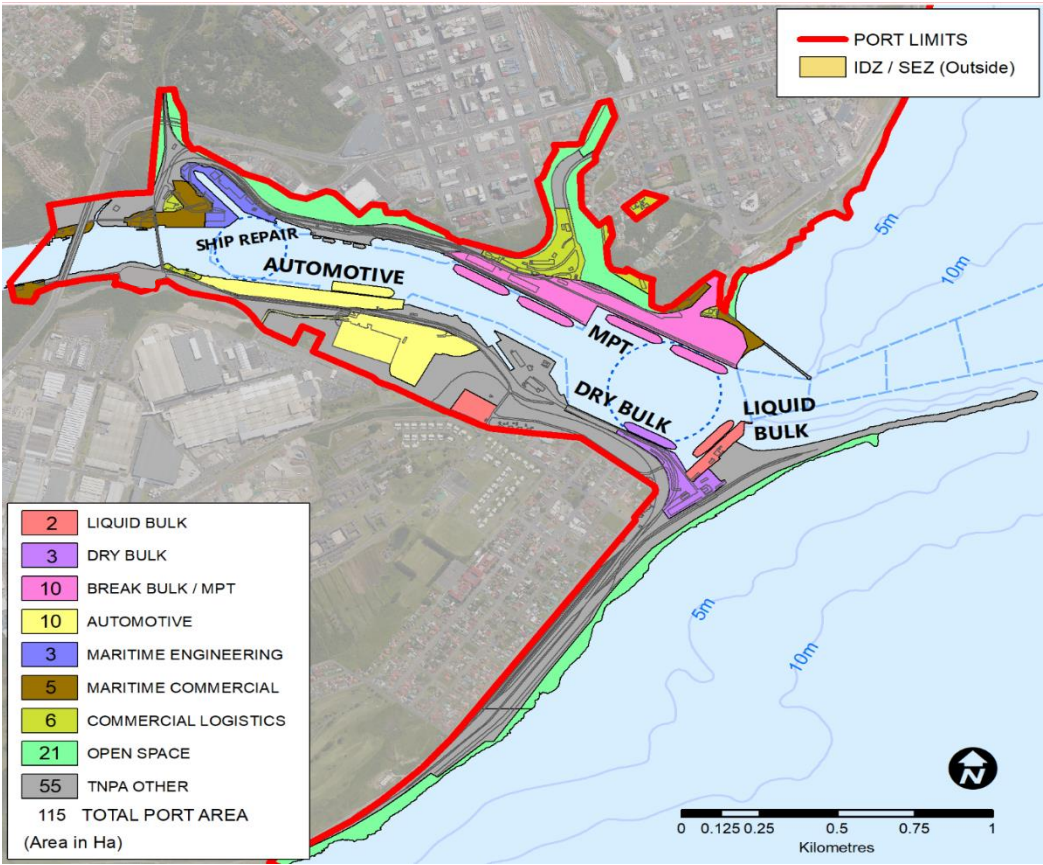
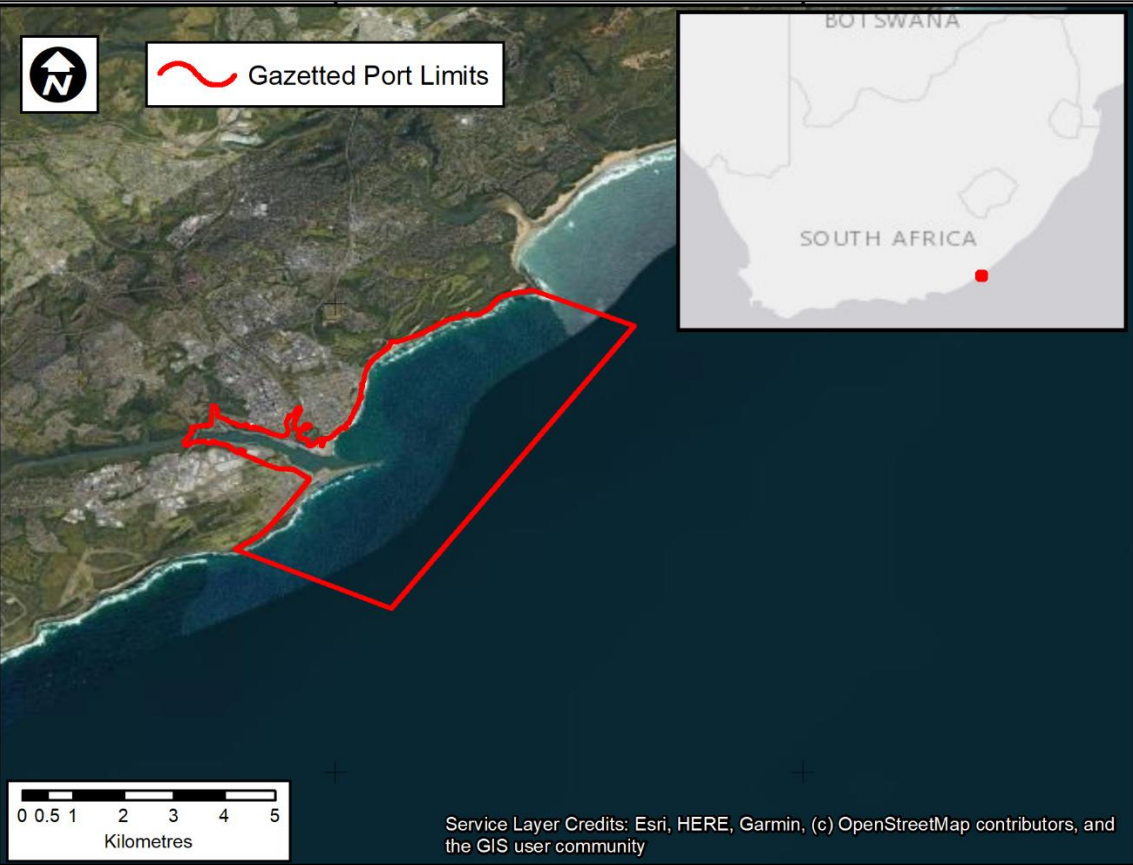


PORT OF EAST LONDON



PORT OF EAST LONDON

Port Limits Layout



PORT OF EAST LONDON

Current Layout

Role of the Port:

To be a key player in the region's automotive industry as well as handling containers, general cargo, grain products, green economy and providing ship repair services.

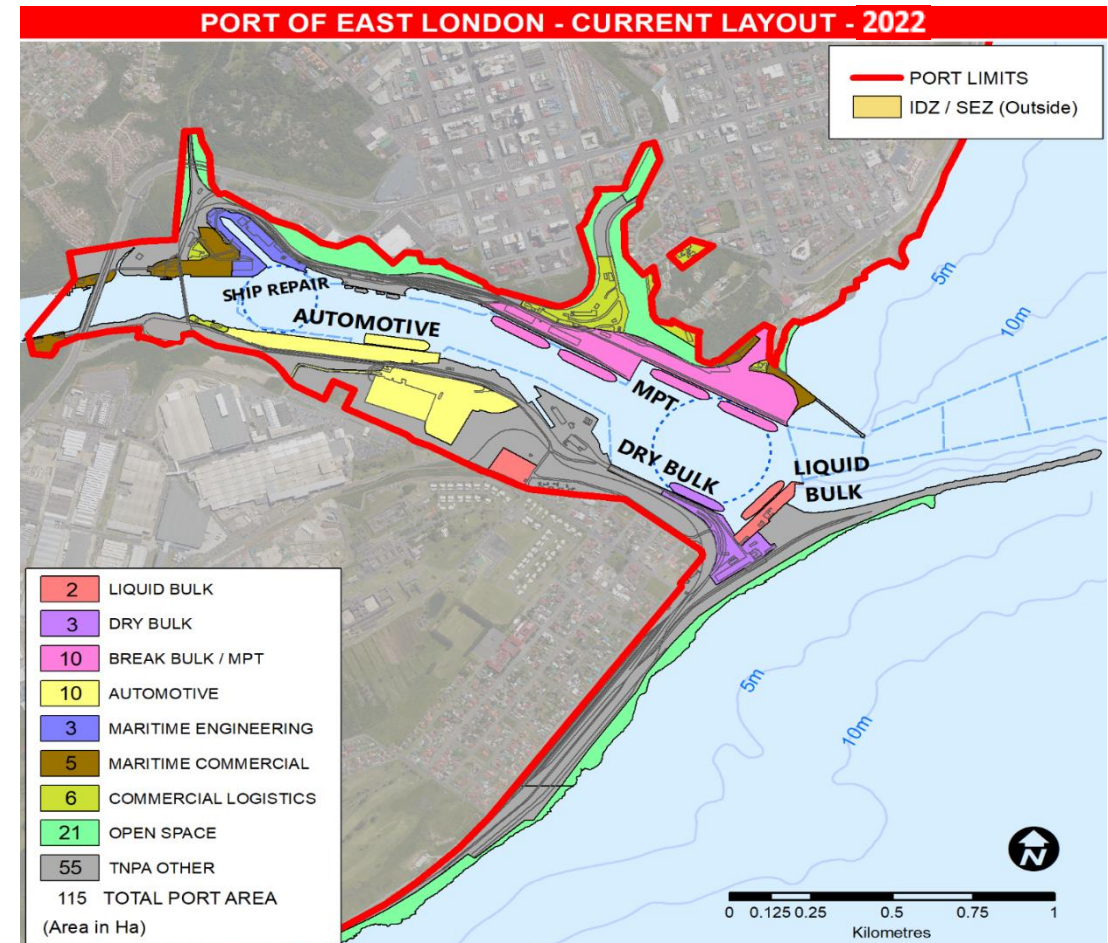
Vision of the Port

To maintain a leading role in the country's automotive sector and facilitate trade and economic growth by providing and sustaining a reliable and cost-effective port system.

Objectives of the Port:

Realize the port expansion project to alleviate logistical and improve operational inefficiencies;

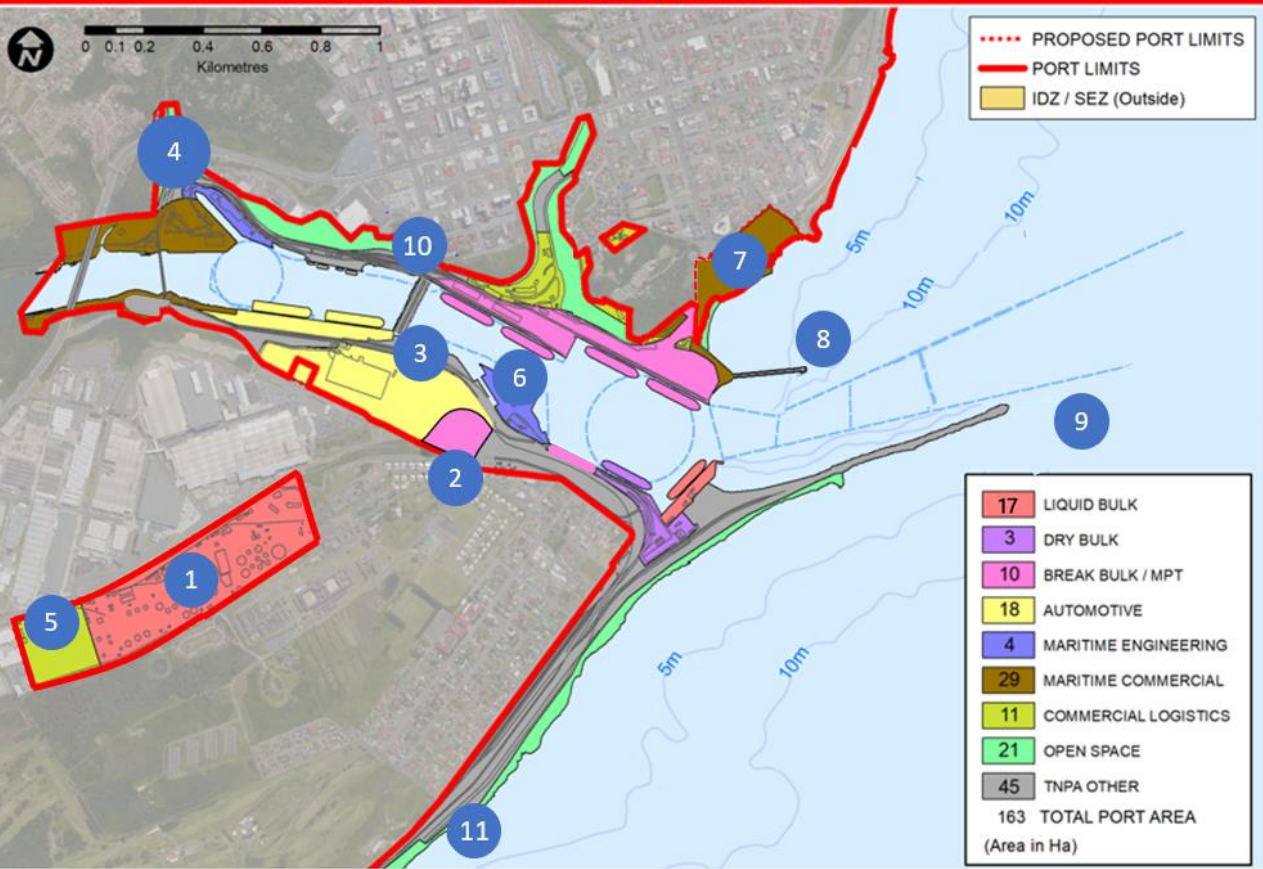
- ✓ *Utilize its strategic location to stimulate growth in the automotive, manufacturing, agro-processing and green economy industries;*
- ✓ *Achieve infrastructural upgrades to promote port global competitiveness through increased levels of operational efficiencies*



PORT OF EAST LONDON

PDFP Short Term - 2032

EAST LONDON - SHORT TERM LAYOUT - 2032



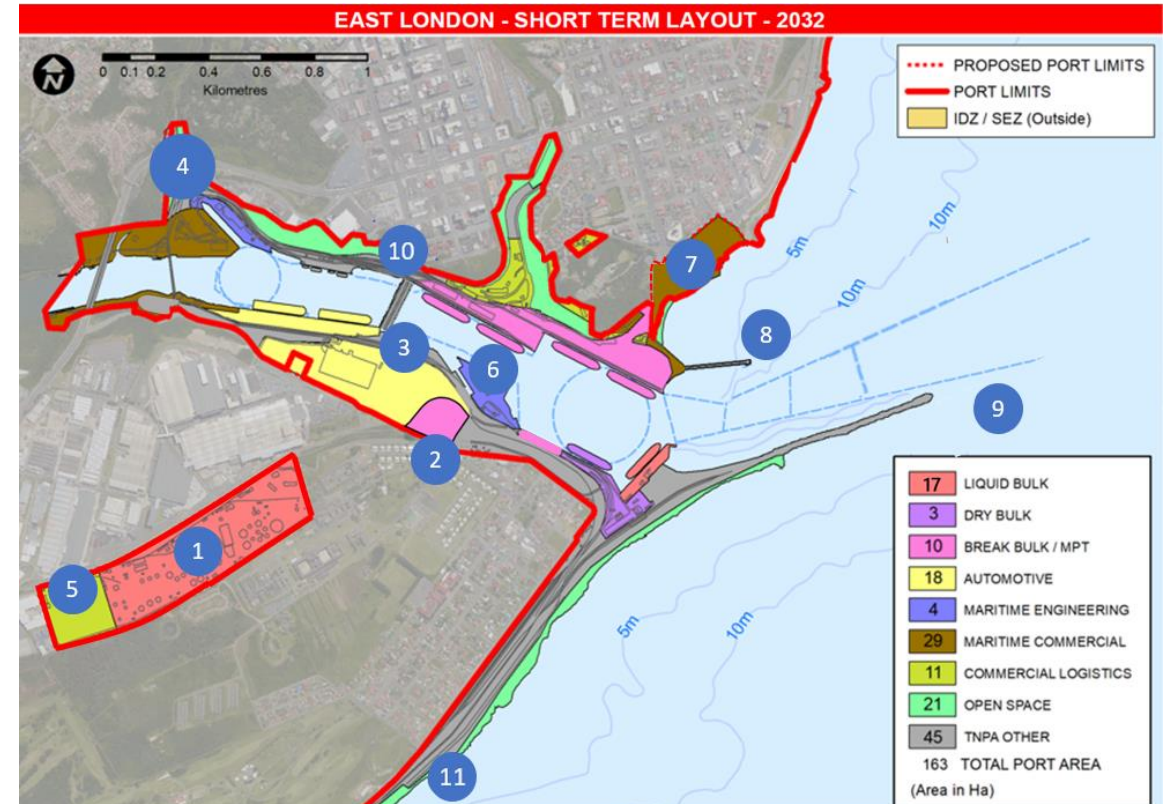
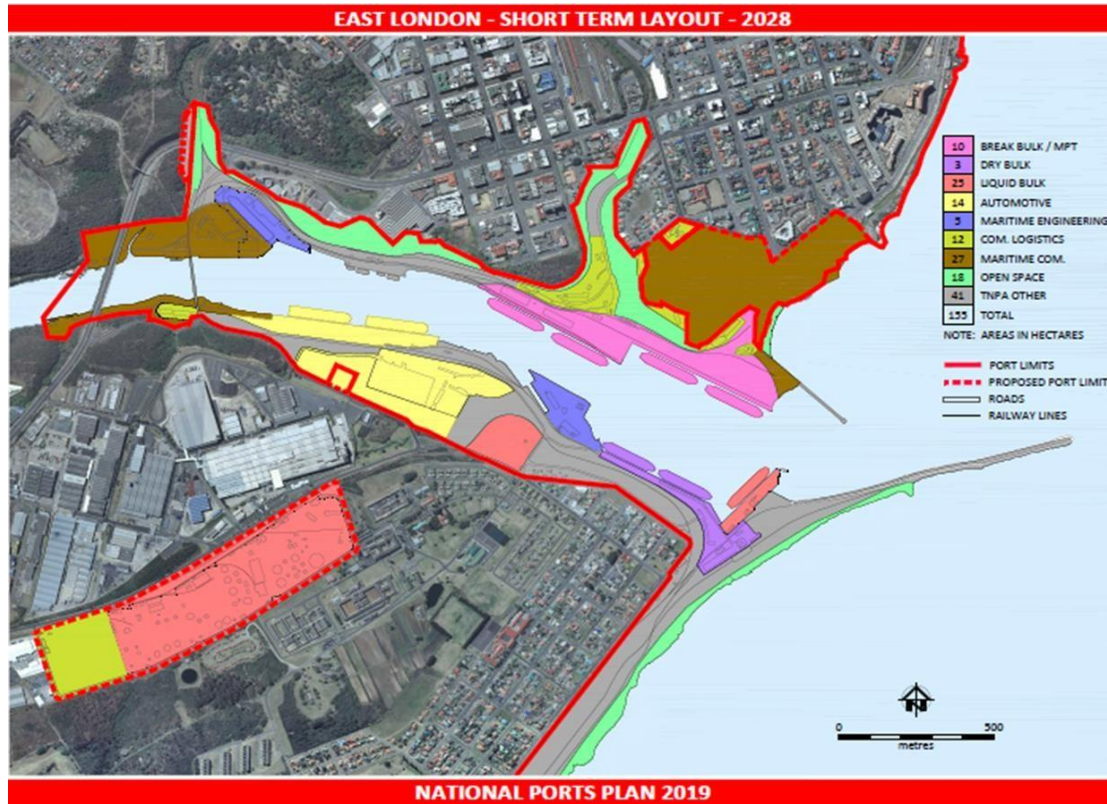
Notes:

- ✓ Further studies on the feasibility of the bridge structure (10) will be conducted. These studies will investigate the costs, viability, and constructability of the initiative. The results from these studies will feed into a multi-criteria analysis to inform the proposal to relocate the MPT terminal to the West Bank.

Project #	Commodity Type	Project Description	Operational Date
1	Liquid Bulk	Due to new proposed port limits and land acquisition at the south-western side of the port, the liquid bulk land area increases from 2 Ha (black tank/old HFO) to 17 Ha (Gately site).	2023
2	Break bulk/MPT	Old HFO site converts to MPT.	2024
3	Automotive	The existing automotive terminal area increases by 8 Ha and Berth N becomes operational due to deepening and strengthening project.	2028
4	Maritime Commercial	TNPA Other and maritime engineering land surrounding the waterfront at Latimer's Landing will convert to maritime commercial.	2028
5	Commercial Logistics	Due to the above new proposed port limits, the available commercial logistics area will increase to double its current available space.	2031
6	Maritime Engineering	The Marine and Manufacturing slipway area converts to maritime engineering.	2032
7	Maritime Commercial	Port limits extend to the north due to land acquisition at the back of the MPT terminal, which converts into maritime commercial.	2032
8	Other	Realignment of the northern breakwater and deepening of entrance channel and turning basin	2032
9	Other	Repositioning of sandtrap.	2032
10	Other	Construction of a bridge that connects the East Bank to the West Bank (final location to be finalized in future studies).	2032
11	Other	Potential locations for construction of Fishing Facilities (final location to be finalized in future studies).	2032

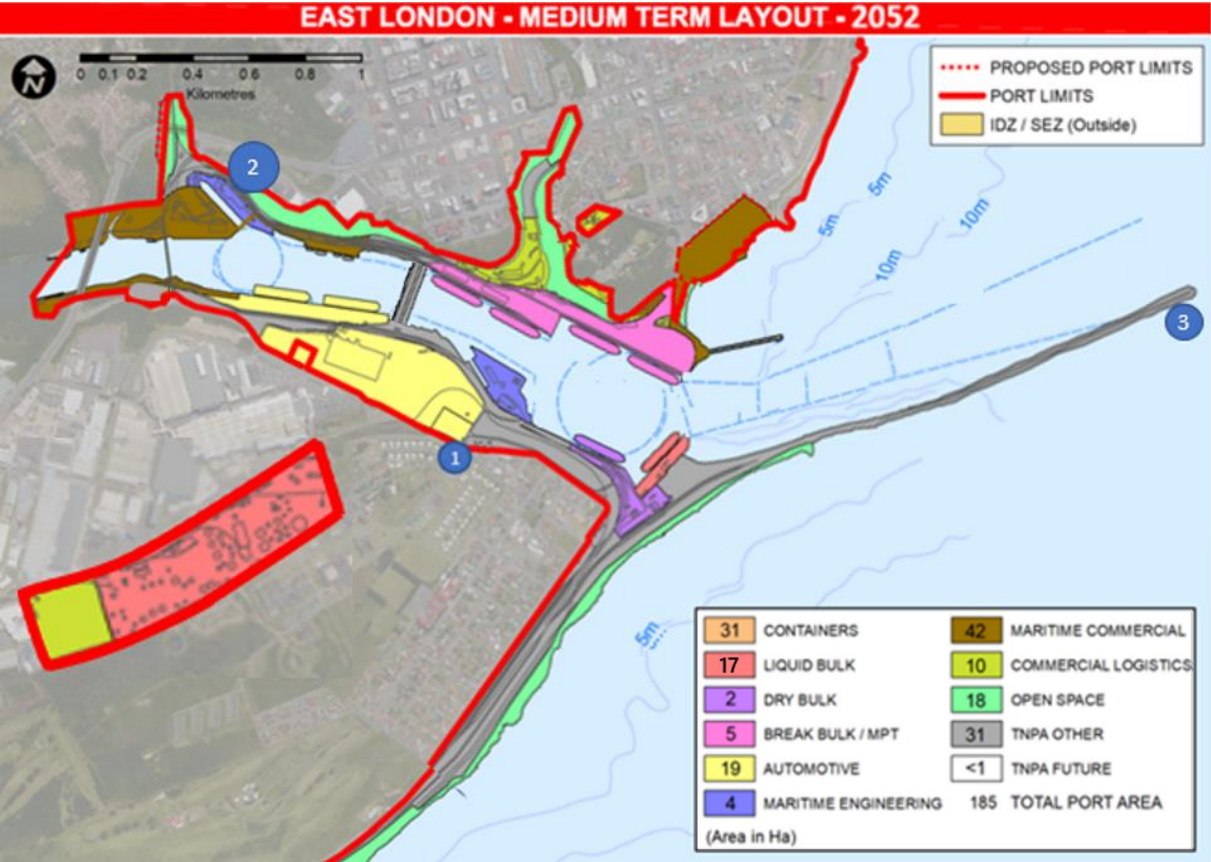
PORT OF EAST LONDON

PDFP Short Term – 2019 vs 2022



PORT OF EAST LONDON

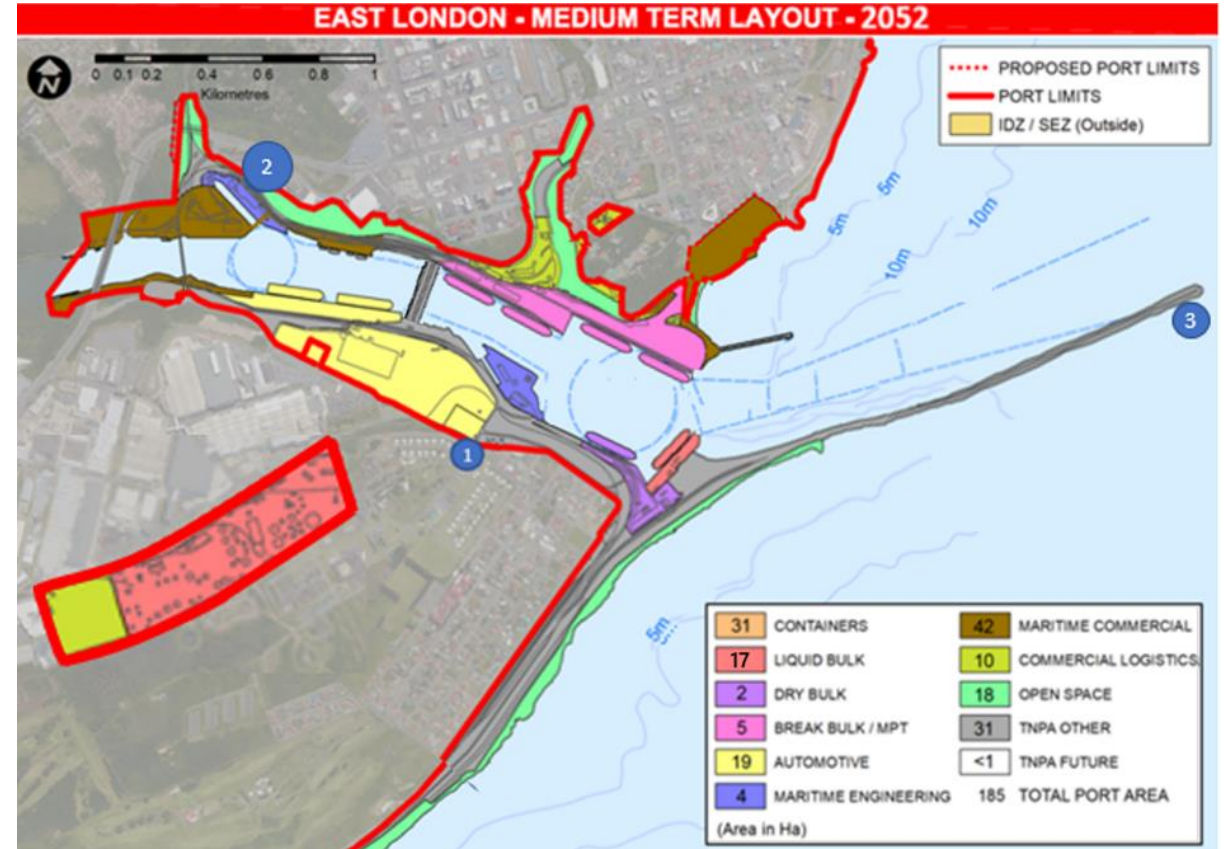
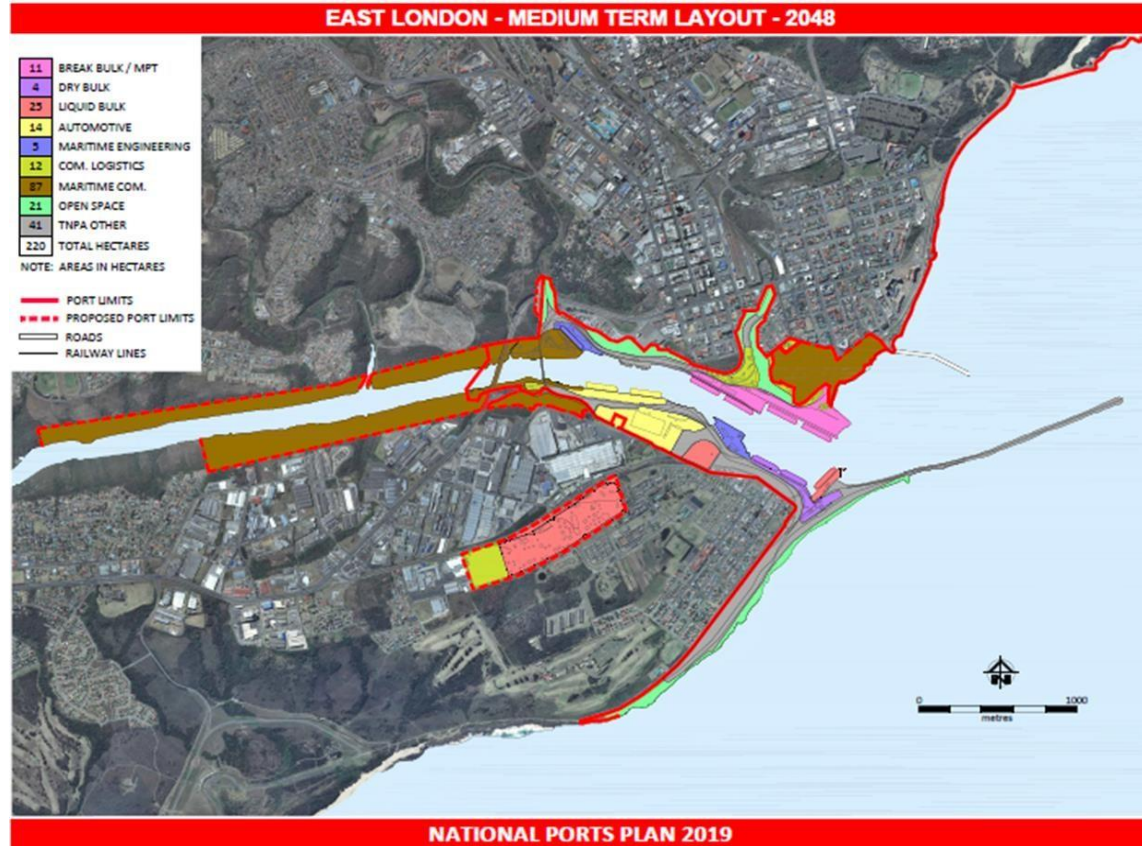
PDFP Medium Term - 2052



Project #	Commodity Type	Project Description	Operational Date
1	Automotive	Automotive terminal area increases by converting parcel of MPT land to automotive land. The MPT will relocate to the East Bank MPT	2049
2	Maritime Engineering	Expand graving dock and repair quay for maritime engineering with additional services of ship breaking/recycling.	2052
3	Other	Extension of the southern breakwater.	2052

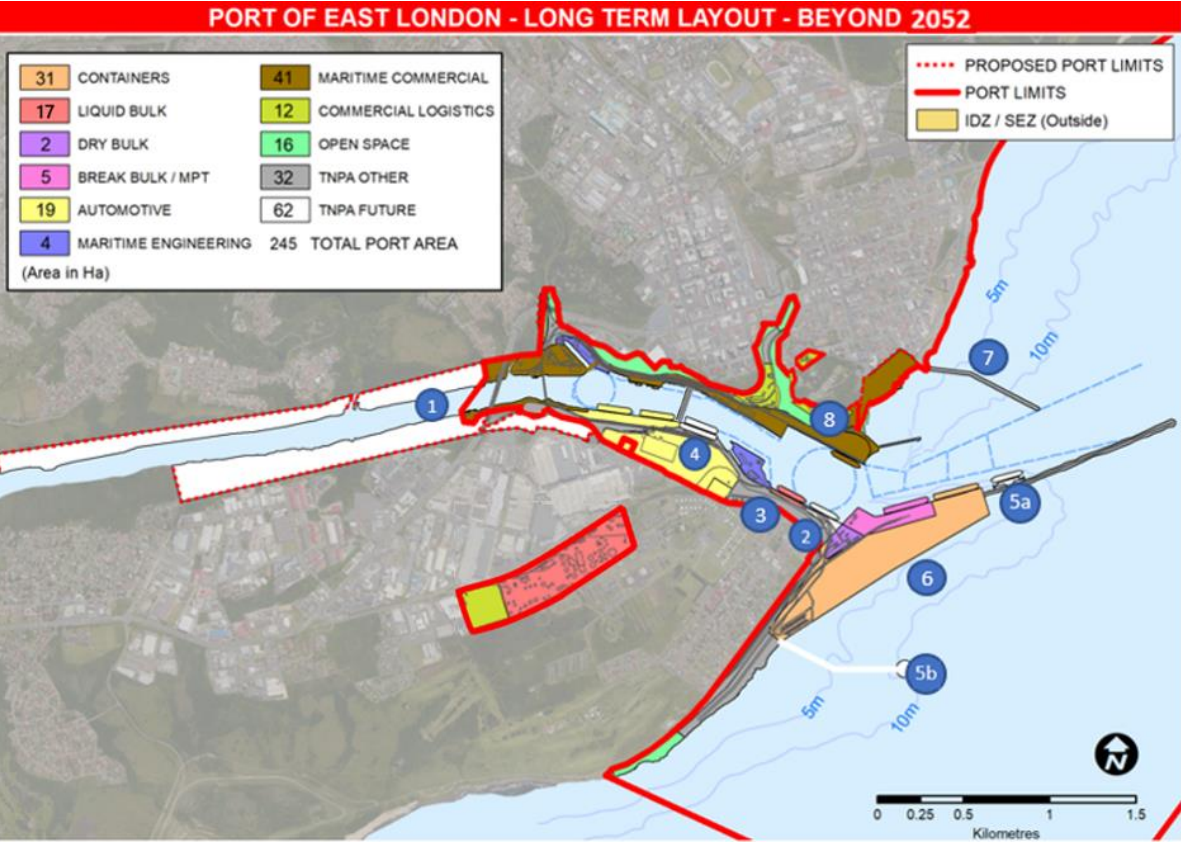
PORT OF EAST LONDON

PDFP Medium Term – 2019 vs 2022



PORT OF EAST LONDON

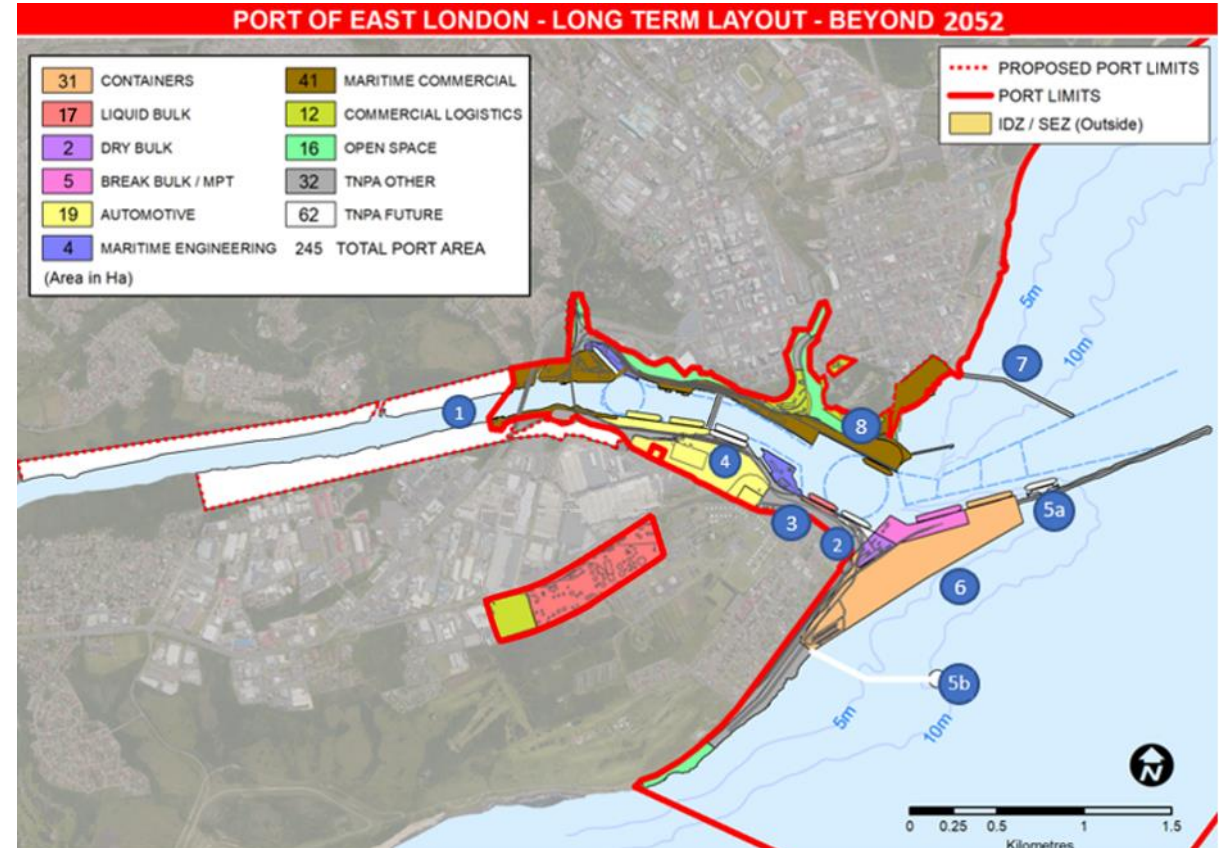
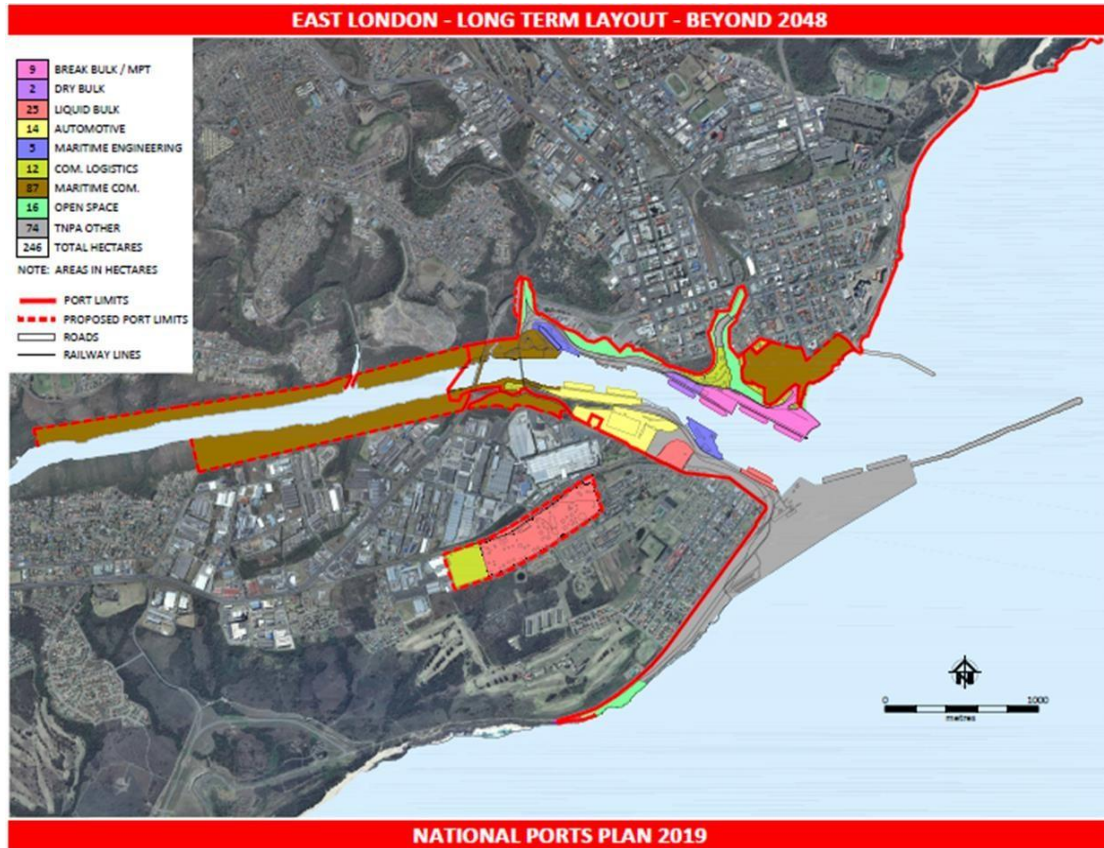
PDFP Long Term - Beyond 2052



Project #	Commodity Type	Project Description	Operational Date
1	Other	TNPA Other land area extends along the river (60 ha).	2052+
2	Dry Bulk	Lengthening of Berth T to provide space for the utilization of a second berth and potential future dry bulk berth.	2052+
3	Liquid bulk	Move Liquid bulk berth to S berth.	2052+
4	Automotive	Construct a new future automotive berth.	2052+
5	Liquid Bulk	Construct second liquid bulk berth through a) jetty structure on breakwater or b) offshore SPM.	2052+
6	Container/ Break Bulk	2 New deep berths and a container/MPT terminal becomes operational on the southern breakwater.	2052+
7	Other	Construction of a new northern breakwater.	2052+
8	Maritime Commercial	East Bank Precinct converts into maritime commercial boulevard that links the Latimer's Landing to the Signal Hill area. This includes the construction of a dedicated cruise terminal at Berth L/M.	2052+

PORT OF EAST LONDON

PDFP Long Term - 2019 vs 2022



TRANSNET



delivering freight reliably

THANK YOU

